



FAM CUBE

CATALOG



C O N T E N T

	PAGE
Office A Necessity for Modern Office Spaces	04
Eco-friendly	06
Aware of eco-friendly product makes your office or home environment safer	
Quiet	08
Use of different acoustic materials to grant you privacy	
Comfortable	10
With ventilation fans, the pod brings fresh air to make environment comfortable	
Convenient	12
R&D team designed the pod structure to save your time and cost	
SCube	16
Suitable for one person to have a phone call / private online meeting	
Working Cube	22
Suitable for one person to perform daily work	
DCube	28
Suitable for two to four person group discussion	
QCube	34
Suitable for four to six person to meeting	
Product Add-ons	40
Provides customization service	



Office Cube A Necessity for Modern Office Spaces

Office Cubes are semi-private booths or small cabins where employees may hold small group meetings or find some private space to work. These pods are independent units that allow workers to work in a remote environment, away from any distraction from public spaces. Unique designs like a portable office pod makes it an ideal optimised office space.



When you work in a modern open-plan office, stress and anxiety can easily creep up. This is particularly true for most introverts. Trying to focus among the hustle and bustles of an open office space can be agonizing for people who work better in a peaceful environment.

A significant lack of privacy may cause anxiety for those who constantly worry that the manager can check everything they are doing at all times. Some people simply need a break from a modern open-plan office to avoid stress. Open-plan office may also leave a negative effect on employees concentration levels, leading to less productivity,

Providing a peaceful, distraction-free office cubes in the office is a great addition, allowing staffs to have a private space to work uninterrupted, and on the other hand is a cost-effective and flexible alternative. Employees can also conduct private brainstorm sessions amongst themselves.

When you choose our cube made with minimal amounts of chemicals, you'll get less harmful pollutants, like volatile organic compounds (VOCs), released into your office's air. According to a report by the European Respiratory Review, "The possible health effects of indoor VOC exposure are a cause for concern, given that people in general, and children in particular, now spend most of their time indoors."



	Test result	OSHA PEL
Formaldehyde	0.008 mg/m ³	0.614 mg/m ³
Benzene	0.0034 mg/m ³	3.195 mg/m ³
Methylene chloride	0.0262 mg/m ³	87 mg/m ³
Toluene	0.0333 mg/m ³	638 mg/m ³
n_Hexane	0.129 mg/m ³	1800 mg/m ³

- 1.The test was performed by SGS-CSTC Standards Technical Services (Shanghai) Co., Ltd as per ISO16000-6.
- 2.The OSHA PEL data refers to <https://www.osha.gov/chemicaldatabase>

ECO-FRIENDLY

Improve workers' health and wellbeing

When you choose sustainable office furniture made with minimal amounts of chemicals, you'll get less harmful pollutants, like VOCs, released into the air. VOCs can have a detrimental impact on workers' health, causing symptoms such as headaches, fatigue and nausea. Formaldehyde is one particularly concerning VOC that has been linked to cancer. It is often found in adhesives and paints used during the manufacturing process.

One study found that:
"Indoor environmental quality parameters in an office, such as low total VOCs, high ventilation and low carbon dioxide all lead to better cognitive performance."

By making sustainable choices when buying office furniture, you can enhance the experience of workers, boost productivity and improve the quality of their lives - all while reducing demand on the environment.

01



01

Egg Crate Acoustic Foam

Foam absorbs noise for excellent sound and noise control and also reduces reverberation times. Egg crate foam sound-proofing is widely used in recording studios, home theatre, broadcasting studios, and many other industrial and commercial spaces

02

A sandwich element

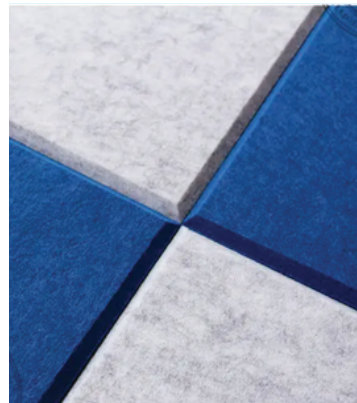
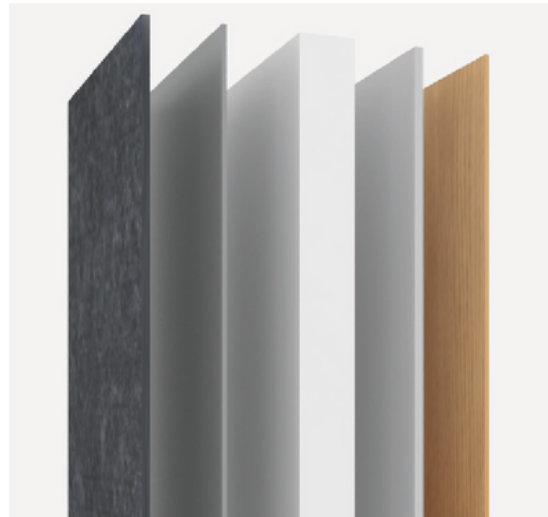
A sandwich element of sheet metal, fire rated gypsum board, recycled acoustic foam and acoustic felt which reach good soundproof.

03

Acoustic Absorption Panel

Composed of compressed mineral wool or foam, sound absorbing acoustic panels absorb sound waves to reduce general noise, clarify speech and limit reverberation in walls within enclosed areas.

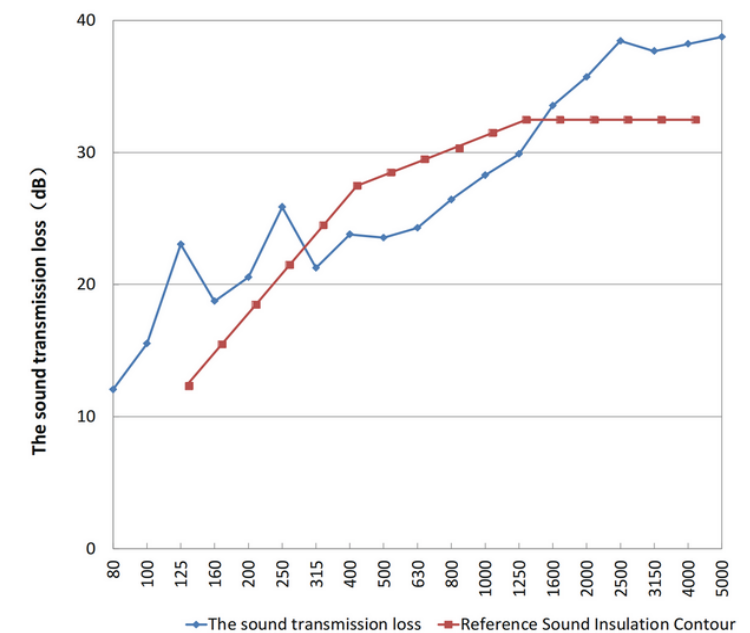
02



03

QUIET

The noise reduction of the tested specimen are plotted as follows,



STC 30dB (±5dB)

KEEP PRIVACY

If you've ever worked in an office, you'll know that some conversations are difficult to have in front of your colleagues – whether it's because you get nervous talking in front of other people, or if there's sensitive client information you need to discuss privately. This is where a booth comes in handy.

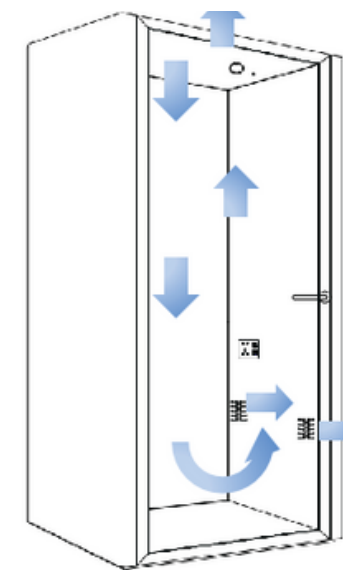
Booths that support noise occlusion offer a safe, secure space to give employees the privacy they desire and also prevent disrupting everyone else in the office too. It's a win-win!



COMFORTABLE

Improving concentration & productivity

We get distracted every 11 minutes and 25% of lost time is due to distractions in or near work areas. Providing a place where people can go to escape visual and audio disruptions will help keep concentration and productivity in order. Creating a comfortable work setting which is designed in response to common workplace issues is an effective way to improve employee experience and job satisfaction.



VENTILATION FANS

This works to bring fresh air from the outside and into the enclosed pod. It helps circulate air through the pod inside, which prevents individuals from breathing stuffy, less oxygenated air.



ERGONOMIC DESIGN

Ergonomic furniture works to fix employees' posture, realign their spine, prevent arthritis and reduce the number of work-related injuries overall.

6
pre-fab modules
4
casters
2
hours assembly

CON-
VENIENT



CHOOSE PRE- FAB CUBES

R&D team design the pod as prefab structure. Prefabrication allows us to work in a controlled environment, utilizing standardized processes. It also allows us to set up standardized checks all the way through manufacturing to assembly.

We have found that prefabrication typically has 25% schedule savings. Having knowledge of how long each component takes to design, fabricate, and deliver is a key element in these savings. Fewer errors and greater efficiencies translate to high cost savings for you.



SAVE TIME

The installation of prefab pod is quick and efficient. You're not waiting for someone to measure, cut, and assemble each panel. The entire prefab component is easily installed by a small crew in just hours.



PORTABLE

Thanks to casters and lightweight design, You can easily move them for use in various places throughout your office—or to an entirely new location.



SAVE COST

Pre-fab booths and rooms are becoming the industry standard. It not only save material cost, but also labor , delivery and storage cost for its high modular panels.



SCUBE



SCube

SCube is the classic office phone booth, ideal for important calls or video conferences. Have your discussions in privacy without disturbing your colleagues.



Front view



Back view



Oblique view

SCube

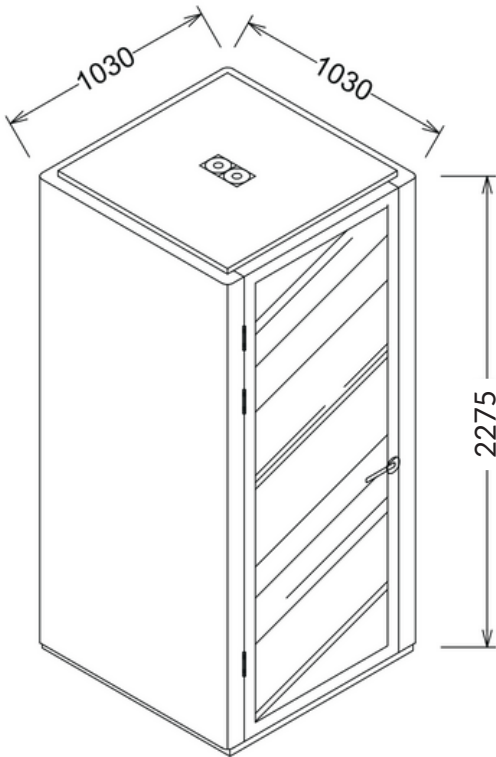
MATERIALS

- Exterior**
Painted sheet metal
- Frames**
Aluminium
- Carpet**
Anti-static and stain resistance low loop pile carpet for the floor
- Walls and roof**
A sandwich element of sheet metal, fire rated gypsum board, recycled acoustic foam and acoustic felt
- Glass**
10mm tempered glass with aluminium frame
- Door**
Back painted 6mm tempered glass with aluminium frame



MEASUREMENTS

- Exterior**
1030mm*1030mm*2275mm (width, depth, height)
- Interior**
905mm*905mm*2070mm (width, depth, height)
- Doorway**
840mm width
- Regular table**
280mm*500mm*25mm (width, length, thickness)
- Weight**
400kg
- Package size**
1.46CBM
2250mm*1060mm*610mm (length, width, height)
- Container loading qty**
15 sets/20GP, 33 sets/40GP, 44 sets/40HQ



POWER

- Power consumption**
10W while in use (Standard configuration)
 - LED light: 4W
 - Fan (2 pcs), 1.56W each3 meter wire
- Table outlets**
Power socket (Universal, country-specific), USB
Optional: LAN, type C
- Ventilation**
Total air flow is 154.91m³/h, air replaced every 0.85 minute
- Lighting**
Inductive LED light: 4000K

COLOR

- Exterior**

White (Standard)

Black

Wood-grain

*Color can be customized as per RAL color code.
- Interior**

GP 18 (Standard)

GP 03

GP 22

GP 27

GP 08

GP 26

GP 46

GP 05

GP 20

GP 06

GP 12

GP 15
- Desktop**

White (Standard)

Black

Wood-grain (0725)
- Sofa**

1333 (Standard)

1300

1302

1313

1320

1321

1309

1318
- Carpet**

Grey (Standard)

Grey+Blue



WORKING CUBE

WORKING CUBE

Working Cube is a multi-functional, soundproof space for 1 person to work, study in private without disturbing office and the office disturbing you.



Front view



Back view



Oblique view

WORKING CUBE

MATERIALS

Exterior

Painted sheet metal

Frames

Aluminium

Carpet

Anti-static and stain resistance low loop pile carpet for the floor

Walls and roof

A sandwich element of sheet metal, fire rated gypsum board, recycled acoustic foam and acoustic felt

Glass

10mm tempered glass with aluminium frame

Door

Back painted 6mm tempered glass with aluminium frame



MEASUREMENTS

Exterior

1615mm*1200mm*2275mm (width, depth, height)

Interior

1490mm*1075mm*2070mm (width, depth, height)

Doorway

840mm width

Regular table

600mm*1070mm*25mm (width, length, thickness)

Weight

524kg

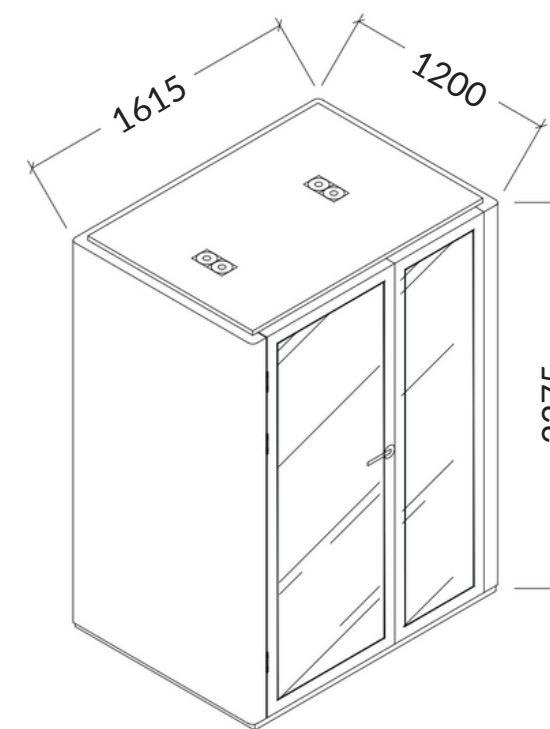
Package size

2.1CBM

2250mm*1240mm*750mm (length, width, height)

Container loading qty

12 sets/20GP, 27 sets/40GP, 27 sets/40HQ



POWER

Power consumption

10W while in use (Standard configuration)

- LED light: 4W
- Fan (2 pcs), 1.56W each

3 meter wire

Table outlets

Power socket (Universal, country-specific), USB

Optional: LAN, type C

Ventilation

Total air flow is 309.82m³/h, air replaced every 0.80 minute

Lighting

Inductive LED light: 4000K

COLOR

Exterior



White (Standard)



Black



Wood-grain

*Color can be customized as per RAL color code.

Interior



GP 18
(Standard)



GP 03



GP 22



GP 27



GP 08



GP 26



GP 46



GP 05



GP 20



GP 06



GP 12



GP 15

Sofa



1333
(Standard)



1300



1302



1313



1320



1321



1309



1318

Desktop



White (Standard)



Black



Wood-grain (0725)

Carpet



Grey (Standard)



Grey+Blue



DCUBE

DCube

DCube meeting cube is designed for 2 to 4 person to have meeting, one to one conversation, brainstorm session. The superior sound insulation and ventilation system ensure your talks in private and stay comfortable.



Front view



Back view



Oblique view

DCube

MATERIALS

Exterior
Painted sheet metal

Frames
Aluminium

Carpet
Anti-static and stain resistance low loop pile carpet for the floor

Walls and roof
A sandwich element of sheet metal, fire rated gypsum board, recycled acoustic foam and acoustic felt

Glass
10mm tempered glass with aluminium frame

Door
Back painted 6mm tempered glass with aluminium frame



MEASUREMENTS

Exterior
2200mm*1200mm*2275mm (width, depth, height)

Interior
2075mm*1075mm*2070mm (width, depth, height)

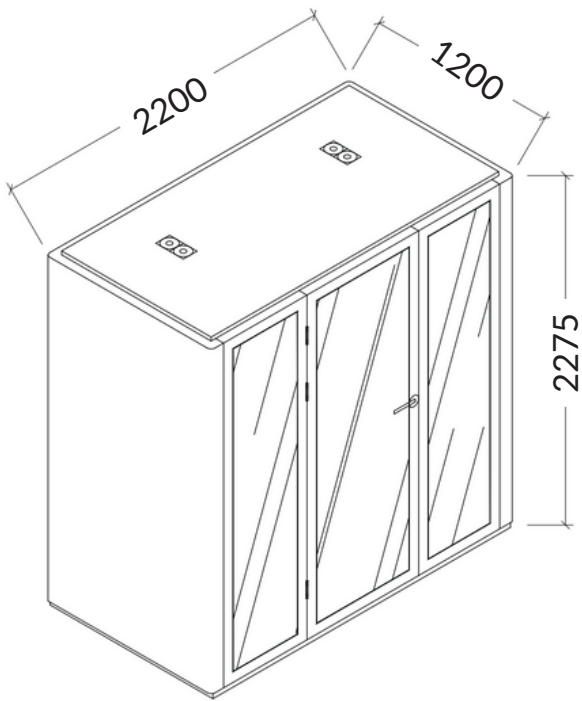
Doorway
840mm width

Regular table
500mm*700mm*25mm (width, length, thickness)

Weight
660kg

Package size
2.26CBM
2250mm*1240mm*810mm (length, width, height)

Container loading qty
8 sets/20GP, 18 sets/40G, 27 sets/40HQ



POWER

Power consumption
10W while in use (Standard configuration)

- LED light: 6W
- Fan (2 pcs), 1.56W each

3 meter wire

Table outlets
Power socket (Universal, country-specific), USB
Optional: LAN, type C

Ventilation
Total air flow is 309.82m³/h, air replaced every 1.12 minute

Lighting
Inductive LED light: 4000K

COLOR

Exterior

White (Standard) Black Wood-grain

*Color can be customized as per RAL color code.

Interior

GP 18 (Standard) GP 03 GP 22 GP 27
GP 08 GP 26 GP 46 GP 05
GP 20 GP 06 GP 12 GP 15

Desktop

White (Standard)
Black
Wood-grain (0725)

Sofa

1333 (Standard) 1300 1302 1313
1320 1321 1309 1318

Carpet

Grey (Standard)
Grey+Blue

QCUBE



QCube

QCube meeting cube allows 4 to 6 person to have group brainstorm in private. Providing a comfortable meeting environment for everyone.



Front view



Back view



Oblique view

QCube



MATERIALS

Exterior

Painted sheet metal

Frames

Aluminium

Carpet

Anti-static and stain resistance low loop pile carpet for the floor

Walls and roof

A sandwich element of sheet metal, fire rated gypsum board, recycled acoustic foam and acoustic felt

Glass

10mm tempered glass with aluminium frame

Door

Back painted 6mm tempered glass with aluminium frame

POWER

Power consumption

30W while in use (Standard configuration)

- LED light: 6W
- Fan (4 pcs), 1.56W each

3 meter wire

Table outlets

Power socket (Universal, country-specific), USB

Optional: LAN, type C

Ventilation

Total air flow is 619.64m³/h; air replaced every 0.72 minute

Lighting

Inductive LED light: 4000K

MEASUREMENTS

Exterior

2200mm*1500mm*2275mm (width, depth, height)

Interior

2075mm*1375mm*2070mm (width, depth, height)

Doorway

840mm width

Regular table

500mm*1000mm*25mm (width, length, thickness)

Weight

748kg

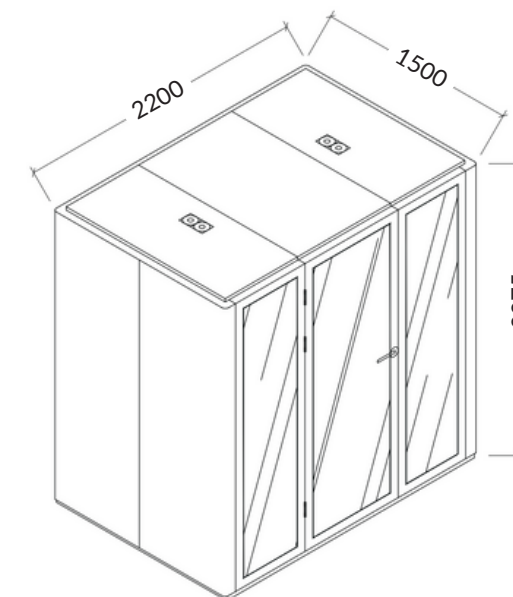
Package size

2.4CBM

2250mm*1030mm*1030mm (length, width, height)

Container loading qty

10 sets/20GP, 24 sets/40G, 24 sets/40HQ



COLOR

Exterior



White (Standard)



Black



Wood-grain

*Color can be customized as per RAL color code.

Interior



GP 18
(Standard)



GP 03



GP 22



GP 27



GP 08



GP 26



GP 46



GP 05



GP 20



GP 06



GP 12



GP 15

Sofa



1333
(Standard)



1300



1302



1313



1320



1321



1309



1318

Desktop



White (Standard)



Black



Wood-grain (0725)

Carpet



Grey (Standard)



Grey+Blue



Customization service provides an enhanced user experience, including customize color, size, electrics, hardwares, etc. We also accept to add logo film on the glass door or side wall of cube to make your company own cube.

PRODUCT ADD-ONS

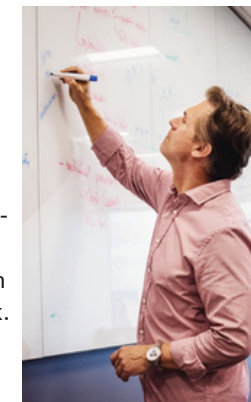


MOUNT DISPLAY

Working Cube and meeting pod series are suitable place for making video meeting. R&D team design an openable panel for electronic devices and easy maintenance, on which display, speaker, light switch can be attached. Available for Working Cube, DCube, QCube and other big size pod.

MAGNETIC WHITEBOARD

Magnetic whiteboards are handy tools that allow you to write important notes, appointments and ideas down and quickly erase them without leaving a mark. Available for all cube series.



STANDING DESK

Standing desks help improve mood and energy levels which help people work comfortable and may even boost productivity with adjustable height. Available for Working Cube and Meeting Cube.



SMART POD

Integrated with touch screen display, EM lock and intelligent system, the pod can booked by apps on the phone. Available for Working Cube and Meeting Cube.



WIRELESS CHARGER

Integrate on the cube desktop, you only need to gently lean the phone on the charger, and the current will be continuously charged into the phone. Available for all cube series.





On-Demand Workspace.
Anytime, Any Place.

CONTACT

www.famsolutions.com.sg

sales@famsolutions.com.sg